

# TENDER BULLETIN

NO.04 OF 2018/19 FY

26 APRIL 2018



# LIMPOPO

**PROVINCIAL GOVERNMENT**  
REPUBLIC OF SOUTH AFRICA

BID DOCUMENTS MAY ALSO BE OBTAINED FOR FREE FROM  
[www.etenders.gov.za](http://www.etenders.gov.za)

# Provincial Supply Chain Management Office

## TABLE OF CONTENTS

	<b>Page No.</b>
1. REPORTING FRAUDULENT AND CORRUPT ACTIVITIES.....	03
2. INSTRUCTIONS.....	04
3. BID INVITATIONS FOR SUPPLIES, SERVICES AND DISPOSALS .....	05
4. ERRATUM.....	06
5. AWAERDED BIDS.....	07-18
6. CANCELLED BIDS.....	19
7. SPECIAL NOTICES.....	20-23
ANNEXURE 1: ADDRESS LIST AND CONTACT DETAILS: PROVINCIAL DEPARTMENTS.....	24
ANNEXURE 2: ADDRESS LIST AND CONTACT DETAILS: PUBLIC ENTITIES.....	25
ANNEXURE 3: ADDRESS LIST AND CONTACT DETAILS: PROVINCIAL TREASURY TENDER ADVISE CENTRES .....	26
ANNEXURE 4: ADDRESS LIST AND CONTACT DETAILS: SATELLITE OFFICES .....	27
8. SELF REGISTRATION PROCESS.....	28

**REPORT**

**FRAUDULENT & CORRUPT ACTIVITIES ON GOVERNMENT PROCUREMENT SYSTEM**

---

***National Anti-Corruption @ 0800 701 701***

***Security and Investigating Services – Limpopo Provincial Treasury @ 015 298 7196***

---

**ALL COMPLAINTS/CONCERNS RELATED TO SCM NON-COMPLIANCE MUST BE REPORTED TO:**

**LIMPOPO PROVINCIAL TREASURY**

**PRIVATE BAG X 9486**

**POLOKWANE**

**0700**

**PROVINCIAL TREASURY, FINANCE HOUSE, 56 – 58 PAUL KRUGER STREET, POLOKWANE**

## 2. INSTRUCTIONS

1. Bidders are advised to read the entire tender bulletin.
2. Tenders for procurement of supplies, services and disposals are categorized as follows:

### **SUPPLIES**

- Accommodation, leasing of
- Audio visual equipment
- Building material
- Chemicals: Agricultural/Forestry/
- Laboratory/Water Care
- Clothing/Textiles
- Computer equipment
- Computer software
- Electrical equipment
- Electronic equipment
- Furniture
- General
- Medical
- Office equipment: Labour-saving devices
- Perishable provisions
- Stationary/printing
- Steel
- Timber
- Vehicle (all types)
- Workshop equipment

### **SERVICES**

- Building
- Civil
- Electrical
- Functional (including cleaning-, and security services)
- General
- Maintenance of electrical, mechanical equipment and plumbing
- Mechanical
- Professional
- Repair and maintenance of vehicles
- Transport

### **DISPOSALS**

- Clothing and textiles
- Furniture
- General
- Scrap metal
- Vehicles

3. Bid documents are generally available in English only.
4. The address where a bid document is available from and where it must be submitted to may differ.
5. The addresses at which bid documents may be obtained and to which tenders must be posted, appear in Annexure 1.
6. The address list of various Supply Chain Management Advice Centres at which bid documents and tender bulletins may also be obtained, appear in Annexure 3; and
7. The address list of Supply Chain Management satellite offices at which tender bulletins may also be obtained, appear in Annexure 4.

3. BID INVITATIONS FOR SUPPLIES, SERVICES AND DISPOSALS

BID NO.	DESCRIPTION OF SERVICE OR SUPPLIES	CONTACT DETAILS	BID DOCUMENT PRICE (NON-REFUNDABLE)	DUE AT 11H00	BID DOCUMENTS OBTAINABLE FROM	POST OR DELIVER BIDS TO
					See Annexure 1 & 2, Page 24 & 25	

DSDP/34 & 36/18	<p>Provision of catering services at Iris House Child and Youth Care Centre and Seshego Treatment Centre for the period of three years</p> <p><b>COMPULSORY BRIEFING SESSION</b></p> <p><b>Date:</b> 15/05/2018  <b>Venue:</b> Polokwane Welfare Complex  <b>Time:</b> 09H00</p> <p><b>Department of Social Development</b></p>	<p><b>ADMINISTRATION PROCESS</b>                      NP Thobejane @ 015 230 4440 and                      MH Mamabolo @  <b>Tel:</b> 015 230 4356 or  <b>Cell:</b> 082 945 8229</p> <p><b>TECHNICAL ASPECTS</b>  <b>Seshego Treatment Centre:</b>                      PW Cholo @  <b>Tel:</b>015 230 4300 or  <b>Cell:</b> 082 745 8058</p> <p><b>Iris House Child and Youth Care Centre:</b>                      HM Mayimele @                      015 812 0386</p>	R85-00	29/05/2018	100	100
-----------------	---	--	--------	------------	-----	-----

**4. ERRATUM**

**DEPARTMENT OF HEALTH**

**4.1 RECTIFICATION OF BID NUMBER, AND DESCRIPTION**

The bid number was erroneously advertised on the Tender Bulletin no.03 of 2018/19 FY dated 20/04/2018 as HEDP989/17/18 instead HEDP990/18/19 and description as follows: Supply, delivery, installation, commissioning and maintenance of Medical Equipment Linear Accelerator and Multisport Argon Laser Machine in Limpopo Department of Health for a period of sixty month

4. AWARDED BIDS

DEPARTMENT OF EDUCATION

NO.	BID NO. (LDE/B )	DESCRIPTI ON	ADVERT PERIOD		SUPPLIER(S)	PRICE(S)	TOTAL POINTS ATTAIN ED	DATE OF AWARD
			DATE OF ADVERT	CLOSIN G DATE				
1	LDE/B19/2017/18	Supply and delivery of foodstuff: Primary and Secondary Schools	29-Sep-17	24-Oct-17	SHELA CIVILS (PTY)LTD	Pre-determined rates	100	22/03/2018
2	LDE/B19/2017/18		29-Sep-17	24-Oct-17	MASHISHI MAGOENG CONSTRUCTION	Pre-determined rates	100	22/03/2018
3	LDE/B19/2017/18		29-Sep-17	24-Oct-17	REMONE PRINTING AND PROJECTS	Pre-determined rates	100	22/03/2018
4	LDE/B19/2017/18		29-Sep-17	24-Oct-17	MOKONDELLELO PROTECTION SERVICES	Pre-determined rates	100	22/03/2018
5	LDE/B19/2017/18		29-Sep-17	24-Oct-17	LATONOX	Pre-determined rates	100	22/03/2018
6	LDE/B19/2017/18		29-Sep-17	24-Oct-17	SHABBACK BUSINESS ENTERPRISE	Pre-determined rates	100	22/03/2018
7	LDE/B19/2017/18		29-Sep-17	24-Oct-17	MAOTJI GENERAL TRADING	Pre-determined rates	100	22/03/2018
8	LDE/B19/2017/18		29-Sep-17	24-Oct-17	DIKELEDI ENTERPRISE BOOKSHOP AND CATERING	Pre-determined rates	100	22/03/2018
9	LDE/B19/2017/18		29-Sep-17	24-Oct-17	KGABO MOKGOBU TRADING	Pre-determined rates	100	22/03/2018
10	LDE/B19/2017/18		29-Sep-17	24-Oct-17	DINGATANA	Pre-determined rates	100	22/03/2018
11	LDE/B19/2017/18		29-Sep-17	24-Oct-17	THALEBA PROMOTIONS AND EVENT MANAGEMENT SERVICES	Pre-determined rates	100	22/03/2018
12	LDE/B19/2017/18		29-Sep-17	24-Oct-17	PP LIGHT TRAVELS	Pre-determined rates	100	22/03/2018
13	LDE/B19/2017/18		29-Sep-17	24-Oct-17	PHEM CONSULTING AND PROJECTS MANAGERS	Pre-determined rates	100	22/03/2018
14	LDE/B19/2017/18		29-Sep-17	24-Oct-17	MML FOODS SERVICES	Pre-determined rates	100	22/03/2018
15	LDE/B19/2017/18		29-Sep-17	24-Oct-17	MOLAMO TRADERS	Pre-determined rates	100	22/03/2018
16	LDE/B19/2017/18		29-Sep-17	24-Oct-17	TEN CUBIC CONSTRUCTIONS	Pre-determined rates	100	22/03/2018
17	LDE/B19/2017/18		29-Sep-17	24-Oct-17	TRIPONZA TRADING 548 CC	Pre-determined rates	100	22/03/2018
18	LDE/B19/2017/18		29-Sep-17	24-Oct-17	MUKHUMULI (PTY)LTD	Pre-determined rates	100	22/03/2018
19	LDE/B19/2017/18		29-Sep-17	24-Oct-17	BAXOSAT (PTY) LTD	Pre-determined rates	100	22/03/2018
20	LDE/B19/2017/18		29-Sep-17	24-Oct-17	LEBONENG NORTH INVESTMENTS	Pre-determined rates	100	22/03/2018

**LIMPOPO PROVINCIAL TENDER BULLETIN NO 04 OF 2018/19 FY, 26 APRIL 2018**

NO.	BID NO. (LDE/B )	DESCRIPTI ON	ADVERT PERIOD		SUPPLIER(S)	PRICE(S)	TOTAL POINTS ATTAIN ED	DATE OF AWARD
			DATE OF ADVERT	CLOSIN G DATE				
21	LDE/B19/2017/18		29-Sep-17	24-Oct-17	LIMPOPO SUPPLEMENTS TRADERS	Pre-determined rates	100	22/03/2018
22	LDE/B19/2017/18		29-Sep-17	24-Oct-17	MOKATEMONE CONSTRUCTION AND PROJECTS	Pre-determined rates	100	22/03/2018
23	LDE/B19/2017/18		29-Sep-17	24-Oct-17	MTR BUSINESS ENTERPRISE & GENERAL CONTRACTORS	Pre-determined rates	100	22/03/2018
24	LDE/B19/2017/18		29-Sep-17	24-Oct-17	MOTLOTLOMI (PTY)LTD	Pre-determined rates	100	22/03/2018
25	LDE/B19/2017/18		29-Sep-17	24-Oct-17	RAMANALA BUSINESS ENTERPRISE	Pre-determined rates	100	22/03/2018
26	LDE/B19/2017/18		29-Sep-17	24-Oct-17	DALAS BUSINESS ENTERPRISE	Pre-determined rates	100	22/03/2018
27	LDE/B19/2017/18		29-Sep-17	24-Oct-17	MC JUNIOR TRADING ENTERPRISE	Pre-determined rates	100	22/03/2018
28	LDE/B19/2017/18		29-Sep-17	24-Oct-17	RISIMATI CONSULTING ENGINEERS	Pre-determined rates	100	22/03/2018
29	LDE/B19/2017/18		29-Sep-17	24-Oct-17	MABE MULTIPROJECT	Pre-determined rates	100	22/03/2018
30	LDE/B19/2017/18		29-Sep-17	24-Oct-17	DEVET MANAGEMENT SOLUTIONS	Pre-determined rates	100	22/03/2018
31	LDE/B19/2017/18		29-Sep-17	24-Oct-17	THAKGA DITSHABA TRADING & PROJECTS PRIMARY CO-OPERATION LTD	Pre-determined rates	100	22/03/2018
32	LDE/B19/2017/18		29-Sep-17	24-Oct-17	MY GRANNY GENERAL TRADING	Pre-determined rates	100	22/03/2018
33	LDE/B19/2017/18		29-Sep-17	24-Oct-17	TTTB SUPPLYING & CONSTRUCTION	Pre-determined rates	100	22/03/2018
34	LDE/B19/2017/18		29-Sep-17	24-Oct-17	S'THEMBILE TRADING ENTERPRISE	Pre-determined rates	100	22/03/2018
35	LDE/B19/2017/18		29-Sep-17	24-Oct-17	TAC GROUP	Pre-determined rates	100	22/03/2018
36	LDE/B19/2017/18		29-Sep-17	24-Oct-17	DIFANYA TRADING	Pre-determined rates	100	22/03/2018
37	LDE/B19/2017/18		29-Sep-17	24-Oct-17	PHUROKU PROJECTS	Pre-determined rates	100	22/03/2018
38	LDE/B19/2017/18		29-Sep-17	24-Oct-17	TODANI (PTY)LTD	Pre-determined rates	100	22/03/2018
39	LDE/B19/2017/18		29-Sep-17	24-Oct-17	LITTLE ANGELS BUSINESS ENTERPRISE	Pre-determined rates	100	22/03/2018
40	LDE/B19/2017/18		29-Sep-17	24-Oct-17	LISHMOK GENERAL TRADING	Pre-determined rates	100	22/03/2018
41	LDE/B19/2017/18		29-Sep-17	24-Oct-17	MARU ENGINEERING	Pre-determined rates	100	22/03/2018
42	LDE/B19/2017/18		29-Sep-17	24-Oct-17	MAENGA INVESTMENTS 2	Pre-determined rates	100	22/03/2018
43	LDE/B19/2017/18		29-Sep-17	24-Oct-17	OMPHA HOLDINGS (PTY)LTD	Pre-determined rates	100	22/03/2018
44	LDE/B19/2017/18		29-Sep-17	24-Oct-17	MOGALE INTERGRATED MANAGEMENT	Pre-determined rates	100	22/03/2018



**LIMPOPO PROVINCIAL TENDER BULLETIN NO 04 OF 2018/19 FY, 26 APRIL 2018**

NO.	BID NO. (LDE/B )	DESCRIPTI ON	ADVERT PERIOD		SUPPLIER(S)	PRICE(S)	TOTAL POINTS ATTAIN ED	DATE OF AWARD
			DATE OF ADVERT	CLOSIN G DATE				
45	LDE/B19/2017/18		29-Sep-17	24-Oct-17	JIM TONEY TRADING ENTERPRISE	Pre-determined rates	100	22/03/2018
46	LDE/B19/2017/18		29-Sep-17	24-Oct-17	MALLALE BUSINESS ENTERPRISE	Pre-determined rates	100	22/03/2018
47	LDE/B19/2017/18		29-Sep-17	24-Oct-17	MAROBA INVESTMENT	Pre-determined rates	100	22/03/2018
48	LDE/B19/2017/18		29-Sep-17	24-Oct-17	JEPMAT (PTY)LTD	Pre-determined rates	100	22/03/2018
49	LDE/B19/2017/18		29-Sep-17	24-Oct-17	MONENE ICT	Pre-determined rates	100	22/03/2018
50	LDE/B19/2017/18		29-Sep-17	24-Oct-17	KHANGUSA (PTY)LTD	Pre-determined rates	100	22/03/2018
51	LDE/B19/2017/18		29-Sep-17	24-Oct-17	MOHOLLA PROJECTS	Pre-determined rates	100	22/03/2018
52	LDE/B19/2017/18		29-Sep-17	24-Oct-17	SILVER EDGE TRADING 25 CC	Pre-determined rates	100	22/03/2018
53	LDE/B19/2017/18		29-Sep-17	24-Oct-17	MOKHUTLOANE TRADING ENTERPRISE	Pre-determined rates	100	22/03/2018
54	LDE/B19/2017/18		29-Sep-17	24-Oct-17	DOBS 1818 TRADING AND PROJECTS	Pre-determined rates	100	22/03/2018
55	LDE/B19/2017/18		29-Sep-17	24-Oct-17	PRO LV FOODS (PTY)LTD	Pre-determined rates	100	22/03/2018
56	LDE/B19/2017/18		29-Sep-17	24-Oct-17	ROSPA TRADING 177	Pre-determined rates	100	22/03/2018
57	LDE/B19/2017/18		29-Sep-17	24-Oct-17	GROWING PATH TRADING 2015	Pre-determined rates	100	22/03/2018
58	LDE/B19/2017/18		29-Sep-17	24-Oct-17	MASJAC ENTERPRISE	Pre-determined rates	100	22/03/2018
59	LDE/B19/2017/18		29-Sep-17	24-Oct-17	MPENANG (PTY)LTD	Pre-determined rates	100	22/03/2018
60	LDE/B19/2017/18		29-Sep-17	24-Oct-17	THEPE GENERAL TRADING	Pre-determined rates	100	22/03/2018
61	LDE/B19/2017/18		29-Sep-17	24-Oct-17	BEJANE CONSTRUCTION	Pre-determined rates	100	22/03/2018
62	LDE/B19/2017/18		29-Sep-17	24-Oct-17	MUHLUKHE INVESTMENT	Pre-determined rates	100	22/03/2018
63	LDE/B19/2017/18		29-Sep-17	24-Oct-17	NKUMANI MULTI PROJECTS (PTY)LTD	Pre-determined rates	100	22/03/2018
64	LDE/B19/2017/18		29-Sep-17	24-Oct-17	SWINAYENA DEVELOPMENT	Pre-determined rates	100	22/03/2018
65	LDE/B19/2017/18		29-Sep-17	24-Oct-17	MAKORONYA GENERAL TRADING CC	Pre-determined rates	100	22/03/2018
66	LDE/B19/2017/18		29-Sep-17	24-Oct-17	NWANHLENGANI SOLUTIONS	Pre-determined rates	100	22/03/2018
67	LDE/B19/2017/18		29-Sep-17	24-Oct-17	MOKHWELEKWETHE AGRICULTURAL COOPERATIVE	Pre-determined rates	100	22/03/2018
68	LDE/B19/2017/18		29-Sep-17	24-Oct-17	KHETANI TRADING ENTERPRISES	Pre-determined rates	100	22/03/2018
69	LDE/B19/2017/18		29-Sep-17	24-Oct-17	KCM TRADING ENTERPRISE	Pre-determined rates	100	22/03/2018
70	LDE/B19/2017/18		29-Sep-17	24-Oct-17	XITSOMBE TRADING ENTERPRISES	Pre-determined rates	100	22/03/2018

**LIMPOPO PROVINCIAL TENDER BULLETIN NO 04 OF 2018/19 FY, 26 APRIL 2018**

NO.	BID NO. (LDE/B )	DESCRIPTI ON	ADVERT PERIOD		SUPPLIER(S)	PRICE(S)	TOTAL POINTS ATTAIN ED	DATE OF AWARD
			DATE OF ADVERT	CLOSIN G DATE				
71	LDE/B19/2017/18		29-Sep-17	24-Oct-17	LETSIMANE TRADING & PROJECTS 85	Pre-determined rates	100	22/03/2018
72	LDE/B19/2017/18		29-Sep-17	24-Oct-17	KARIBU LEISURE RESORT	Pre-determined rates	100	22/03/2018
73	LDE/B19/2017/18		29-Sep-17	24-Oct-17	MANDLABRO CONSTRUCTION PROJECTS	Pre-determined rates	100	22/03/2018
74	LDE/B19/2017/18		29-Sep-17	24-Oct-17	NWA BUSANA TRADING AND PROJECTS	Pre-determined rates	100	22/03/2018
75	LDE/B19/2017/18		29-Sep-17	24-Oct-17	SEHLABANE MULTI PROJECTS	Pre-determined rates	100	22/03/2018
76	LDE/B19/2017/18		29-Sep-17	24-Oct-17	ZINJIVHA BUILDING CONSTRUCTION	Pre-determined rates	100	22/03/2018
77	LDE/B19/2017/18		29-Sep-17	24-Oct-17	MIXO PROPERTIES	Pre-determined rates	100	22/03/2018
78	LDE/B19/2017/18		29-Sep-17	24-Oct-17	THE NBES EXCELLENT LOGISTICS	Pre-determined rates	100	22/03/2018
79	LDE/B19/2017/18		29-Sep-17	24-Oct-17	SYNAGOGUE TRADING CC	Pre-determined rates	100	22/03/2018
80	LDE/B19/2017/18		29-Sep-17	24-Oct-17	DINOKO BRICKS AND LOGISTICS	Pre-determined rates	100	22/03/2018
81	LDE/B19/2017/18		29-Sep-17	24-Oct-17	MAFUWANE BUILDING CONTRACTORS	Pre-determined rates	100	22/03/2018
82	LDE/B19/2017/18		29-Sep-17	24-Oct-17	PINK GINGER TRADING AND PROJECTS	Pre-determined rates	100	22/03/2018
83	LDE/B19/2017/18		29-Sep-17	24-Oct-17	VUC INVESTMENTS	Pre-determined rates	100	22/03/2018
84	LDE/B19/2017/18		29-Sep-17	24-Oct-17	BOLOMBE 82 TRADING & PROJECTS	Pre-determined rates	100	22/03/2018
85	LDE/B19/2017/18		29-Sep-17	24-Oct-17	SSV CONSULTING	Pre-determined rates	100	22/03/2018
86	LDE/B19/2017/18		29-Sep-17	24-Oct-17	NYAMFOKO TRADING & PROJECTS	Pre-determined rates	100	22/03/2018
87	LDE/B19/2017/18		29-Sep-17	24-Oct-17	REMO THIBA TRADING ENTERPRISE	Pre-determined rates	100	22/03/2018
88	LDE/B19/2017/18		29-Sep-17	24-Oct-17	DYNAMIC LEAP	Pre-determined rates	100	22/03/2018
89	LDE/B19/2017/18		29-Sep-17	24-Oct-17	KMS PROJECTS (PTY)LTD	Pre-determined rates	100	22/03/2018
90	LDE/B19/2017/18		29-Sep-17	24-Oct-17	NTIYISO TRANSPORT BUSINESS ENTERPRISE	Pre-determined rates	100	22/03/2018
91	LDE/B19/2017/18		29-Sep-17	24-Oct-17	CONMI TRADING ENTERPRISE	Pre-determined rates	100	22/03/2018
92	LDE/B19/2017/18		29-Sep-17	24-Oct-17	FISHOF 1331	Pre-determined rates	100	22/03/2018
93	LDE/B19/2017/18		29-Sep-17	24-Oct-17	MMUTLANA CONSTRUCTION AND TRANSPORT	Pre-determined rates	100	22/03/2018
94	LDE/B19/2017/18		29-Sep-17	24-Oct-17	MOTHIKENI INVESTMENTS	Pre-determined rates	100	22/03/2018
95	LDE/B19/2017/18		29-Sep-17	24-Oct-17	TOKA TRADING 24	Pre-determined rates	100	22/03/2018

**LIMPOPO PROVINCIAL TENDER BULLETIN NO 04 OF 2018/19 FY, 26 APRIL 2018**

NO.	BID NO. (LDE/B )	DESCRIPTI ON	ADVERT PERIOD		SUPPLIER(S)	PRICE(S)	TOTAL POINTS ATTAIN ED	DATE OF AWARD
			DATE OF ADVERT	CLOSIN G DATE				
96	LDE/B19/2017/18		29-Sep-17	24-Oct-17	MALOME BUSINESS ENTERPRISE	Pre-determined rates	99	22/03/2018
97	LDE/B19/2017/18		29-Sep-17	24-Oct-17	MOGWAPE BUSINESS ENTERPRISE	Pre-determined rates	96	22/03/2018
98	LDE/B19/2017/18		29-Sep-17	24-Oct-17	JAYNOX (PTY)LTD	Pre-determined rates	96	22/03/2018
99	LDE/B19/2017/18		29-Sep-17	24-Oct-17	VENBECK BK	Pre-determined rates	90	22/03/2018
100	LDE/B19/2017/18		29-Sep-17	24-Oct-17	V2V TRADING	Pre-determined rates	90	22/03/2018
101	LDE/B19/2017/18		29-Sep-17	24-Oct-17	VANYAMATSI TRADING ENTERPRISE	Pre-determined rates	90	22/03/2018
102	LDE/B19/2017/18		29-Sep-17	24-Oct-17	THALEMA TRADING ENTERPRISE	Pre-determined rates	100	22/03/2018
103	LDE/B19/2017/18		29-Sep-17	24-Oct-17	BOYSKI TRADING ENTERPRISE	Pre-determined rates	100	22/03/2018
104	LDE/B19/2017/18		29-Sep-17	24-Oct-17	VEXLOTONE	Pre-determined rates	100	22/03/2018
105	LDE/B19/2017/18		29-Sep-17	24-Oct-17	IVS LOGISTICS	Pre-determined rates	100	22/03/2018
106	LDE/B19/2017/18		29-Sep-17	24-Oct-17	MABORA PROJECTS	Pre-determined rates	100	22/03/2018
107	LDE/B19/2017/18		29-Sep-17	24-Oct-17	CRONETIX INVESTMENTS GROUP	Pre-determined rates	100	22/03/2018
108	LDE/B19/2017/18		29-Sep-17	24-Oct-17	TULACOL	Pre-determined rates	100	22/03/2018
109	LDE/B19/2017/18		29-Sep-17	24-Oct-17	VALOWORX 133	Pre-determined rates	100	22/03/2018
110	LDE/B19/2017/18		29-Sep-17	24-Oct-17	MMA -O- TLILE COMMUNICATION T/A MATCOM	Pre-determined rates	100	22/03/2018
111	LDE/B19/2017/18		29-Sep-17	24-Oct-17	SAMURAI	Pre-determined rates	100	22/03/2018
112	LDE/B19/2017/18		29-Sep-17	24-Oct-17	GATSHENI SIZWE PTY LTD	Pre-determined rates	100	22/03/2018
113	LDE/B19/2017/18		29-Sep-17	24-Oct-17	LALAGE CONSTRUCTION AND ADMIN	Pre-determined rates	100	22/03/2018
114	LDE/B19/2017/18		29-Sep-17	24-Oct-17	NNENYANE TRADING CC	Pre-determined rates	100	22/03/2018
115	LDE/B19/2017/18		29-Sep-17	24-Oct-17	MSARIKENG GENERAL SUPPLY	Pre-determined rates	100	22/03/2018
116	LDE/B19/2017/18		29-Sep-17	24-Oct-17	DITSHWANELO TRADING	Pre-determined rates	100	22/03/2018
117	LDE/B19/2017/18		29-Sep-17	24-Oct-17	ALLJOY TRADING ENTERPRISE	Pre-determined rates	100	22/03/2018
118	LDE/B19/2017/18		29-Sep-17	24-Oct-17	KHUNGA MMAPADI INVESTMENT CC	Pre-determined rates	100	22/03/2018
119	LDE/B19/2017/18		29-Sep-17	24-Oct-17	DOZER BRAZ CONSTRUCTION	Pre-determined rates	100	22/03/2018
120	LDE/B19/2017/18		29-Sep-17	24-Oct-17	JERMORG ENTERPRISE & SUPPLIES	Pre-determined rates	100	22/03/2018
121	LDE/B19/2017/18		29-Sep-17	24-Oct-17	TSHEGANE BUSINESS ENTERPRISE	Pre-determined rates	100	22/03/2018

**LIMPOPO PROVINCIAL TENDER BULLETIN NO 04 OF 2018/19 FY, 26 APRIL 2018**

NO.	BID NO. (LDE/B )	DESCRIPTI ON	ADVERT PERIOD		SUPPLIER(S)	PRICE(S)	TOTAL POINTS ATTAIN ED	DATE OF AWARD
			DATE OF ADVERT	CLOSIN G DATE				
122	LDE/B19/2017/18		29-Sep-17	24-Oct-17	TSATUDI GENERAL SERVICES	Pre-determined rates	100	22/03/2018
123	LDE/B19/2017/18		29-Sep-17	24-Oct-17	SEEBO GROUP CC	Pre-determined rates	100	22/03/2018
124	LDE/B19/2017/18		29-Sep-17	24-Oct-17	JANE FURSE TYRES (PTY) LTD	Pre-determined rates	100	22/03/2018
125	LDE/B19/2017/18		29-Sep-17	24-Oct-17	ASITHUTHUKENI BUSINESS ENTERPRISE	Pre-determined rates	100	22/03/2018
126	LDE/B19/2017/18		29-Sep-17	24-Oct-17	MOGOPUDI TRANSPORT AND CATERING SERVICES	Pre-determined rates	100	22/03/2018
127	LDE/B19/2017/18		29-Sep-17	24-Oct-17	LMJ BUSINESS ENTERPRISE	Pre-determined rates	100	22/03/2018
128	LDE/B19/2017/18		29-Sep-17	24-Oct-17	TSHEPHO LEGODI TRADING CC	Pre-determined rates	100	22/03/2018
129	LDE/B19/2017/18		29-Sep-17	24-Oct-17	MAREKETLE GENERAL TRADING (PTY)LTD	Pre-determined rates	100	22/03/2018
130	LDE/B19/2017/18		29-Sep-17	24-Oct-17	MATHOMO MAYO INVESTMENT HOLDINGS	Pre-determined rates	100	22/03/2018
131	LDE/B19/2017/18		29-Sep-17	24-Oct-17	DIKGABISHO TRADING ENTREPRISE	Pre-determined rates	100	22/03/2018
132	LDE/B19/2017/18		29-Sep-17	24-Oct-17	PARIPHASE (PTY)LTD	Pre-determined rates	100	22/03/2018
133	LDE/B19/2017/18		29-Sep-17	24-Oct-17	TRIO PHADIME	Pre-determined rates	100	22/03/2018
134	LDE/B19/2017/18		29-Sep-17	24-Oct-17	LA MMATAU CONSTRUCTION DEVELOPERS	Pre-determined rates	100	22/03/2018
135	LDE/B19/2017/18		29-Sep-17	24-Oct-17	LEB ONE LOGISTICS & DISTRIBUTIONS	Pre-determined rates	100	22/03/2018
136	LDE/B19/2017/18		29-Sep-17	24-Oct-17	MMINA TAU CONSTRUCTION CC	Pre-determined rates	100	22/03/2018
137	LDE/B19/2017/18		29-Sep-17	24-Oct-17	KANYANE CONSULTING AND MANAGEMENT	Pre-determined rates	100	22/03/2018
138	LDE/B19/2017/18		29-Sep-17	24-Oct-17	SEFOLO MALESELA TRADING	Pre-determined rates	100	22/03/2018
139	LDE/B19/2017/18		29-Sep-17	24-Oct-17	MAFIKI TRANSPORT (PTY)LTD	Pre-determined rates	100	22/03/2018
140	LDE/B19/2017/18		29-Sep-17	24-Oct-17	DUNCAN FLORIST	Pre-determined rates	100	22/03/2018
141	LDE/B19/2017/18		29-Sep-17	24-Oct-17	LORD OUR BANNER SECURITY SERVICES	Pre-determined rates	100	22/03/2018
142	LDE/B19/2017/18		29-Sep-17	24-Oct-17	BIG ROCK CONSTRUCTION 74 CC	Pre-determined rates	100	22/03/2018
143	LDE/B19/2017/18		29-Sep-17	24-Oct-17	HLOSKA GROUP	Pre-determined rates	100	22/03/2018
144	LDE/B19/2017/18		29-Sep-17	24-Oct-17	NKOTO CATERING AND PROJECTS	Pre-determined rates	100	22/03/2018
145	LDE/B19/2017/18		29-Sep-17	24-Oct-17	MPHOKATSELA CATER CC	Pre-determined rates	100	22/03/2018

**LIMPOPO PROVINCIAL TENDER BULLETIN NO 04 OF 2018/19 FY, 26 APRIL 2018**

NO.	BID NO. (LDE/B )	DESCRIPTI ON	ADVERT PERIOD	CLOSIN G DATE	SUPPLIER(S)	PRICE(S)	TOTAL POINTS ATTAIN ED	DATE OF AWARD
			DATE OF ADVERT					
146	LDE/B19/ 2017/18		29-Sep-17	24-Oct-17	TUBATSE ART DESIGNER CC	Pre-determined rates	100	22/03/2018
147	LDE/B19/ 2017/18		29-Sep-17	24-Oct-17	MORWAMOGALE TRADING ENTERPRISE	Pre-determined rates	100	22/03/2018
148	LDE/B19/ 2017/18		29-Sep-17	24-Oct-17	KK TRADING AND INVESTMENTS	Pre-determined rates	100	22/03/2018
149	LDE/B19/ 2017/18		29-Sep-17	24-Oct-17	LEMUMBA TRADING & PROJECTS	Pre-determined rates	100	22/03/2018
150	LDE/B19/ 2017/18		29-Sep-17	24-Oct-17	SHON TECHNOLOGIES CC	Pre-determined rates	100	22/03/2018
151	LDE/B19/ 2017/18		29-Sep-17	24-Oct-17	SKAPIE GROUP	Pre-determined rates	100	22/03/2018
152	LDE/B19/ 2017/18		29-Sep-17	24-Oct-17	NKGAGOLELE PROJECTS	Pre-determined rates	100	22/03/2018
153	LDE/B19/ 2017/18		29-Sep-17	24-Oct-17	MOEPAGAUTA TRADING ENTERPRISE 124	Pre-determined rates	100	22/03/2018
154	LDE/B19/ 2017/18		29-Sep-17	24-Oct-17	AN YENDE TRANSPORT & TRADING	Pre-determined rates	100	22/03/2018
155	LDE/B19/ 2017/18		29-Sep-17	24-Oct-17	KGOTSI KGOTSI PROJECT & CATERING	Pre-determined rates	100	22/03/2018
156	LDE/B19/ 2017/18		29-Sep-17	24-Oct-17	MOCKLANE BRILLA	Pre-determined rates	100	22/03/2018
157	LDE/B19/ 2017/18		29-Sep-17	24-Oct-17	NGOATO LE NAREADI CONSTRUCTION	Pre-determined rates	100	22/03/2018
158	LDE/B19/ 2017/18		29-Sep-17	24-Oct-17	MULALO BUSINESS	Pre-determined rates	100	22/03/2018
159	LDE/B19/ 2017/18		29-Sep-17	24-Oct-17	ANTHEC RESOURCES	Pre-determined rates	100	22/03/2018
160	LDE/B19/ 2017/18		29-Sep-17	24-Oct-17	MPHELA A PHELAGO TRADING	Pre-determined rates	100	22/03/2018
161	LDE/B19/ 2017/18		29-Sep-17	24-Oct-17	UNCLE SHAKES GENERAL CONSTRUCTION	Pre-determined rates	100	22/03/2018
162	LDE/B19/ 2017/18		29-Sep-17	24-Oct-17	BABINA TLOU TRADING AND PROJECTS	Pre-determined rates	90	22/03/2018
163	LDE/B19/ 2017/18		29-Sep-17	24-Oct-17	PEBETSE MORASWI TRADING ENTERPRISE	Pre-determined rates	100	22/03/2018
164	LDE/B19/ 2017/18		29-Sep-17	24-Oct-17	REBONE AGANG MOTHEO REC RUITMENT & PROJECTS	Pre-determined rates	100	22/03/2018
165	LDE/B19/ 2017/18		29-Sep-17	24-Oct-17	PHUMZILE MPHELO SERVICES ENGINEERING SERVICES AND SUPPLIER	Pre-determined rates	100	22/03/2018
166	LDE/B19/ 2017/18		29-Sep-17	24-Oct-17	MORWESHADI A NGWATO	Pre-determined rates	100	22/03/2018
167	LDE/B19/ 2017/18		29-Sep-17	24-Oct-17	MJ LEKGOHOANE T/A BOSELE INDUSRIES	Pre-determined rates	100	22/03/2018
168	LDE/B19/ 2017/18		29-Sep-17	24-Oct-17	VHUTHU GROUP INVESTMENTS	Pre-determined rates	100	22/03/2018

**LIMPOPO PROVINCIAL TENDER BULLETIN NO 04 OF 2018/19 FY, 26 APRIL 2018**

NO.	BID NO. (LDE/B )	DESCRIPTI ON	ADVERT PERIOD		SUPPLIER(S)	PRICE(S)	TOTAL POINTS ATTAIN ED	DATE OF AWARD
			DATE OF ADVERT	CLOSIN G DATE				
169	LDE/B19/2017/18		29-Sep-17	24-Oct-17	KLEENTECH INVESTMENTS	Pre-determined rates	100	22/03/2018
170	LDE/B19/2017/18		29-Sep-17	24-Oct-17	REAGETSWE TRADING 246	Pre-determined rates	100	22/03/2018
171	LDE/B19/2017/18		29-Sep-17	24-Oct-17	KOKO'S SUPPLIER AND PROJECTS	Pre-determined rates	100	22/03/2018
172	LDE/B19/2017/18		29-Sep-17	24-Oct-17	MAEMU TRAVELLING AGENCY PTY LTD	Pre-determined rates	100	22/03/2018
173	LDE/B19/2017/18		29-Sep-17	24-Oct-17	ALFRAMER BUSINESS ENTERPRISE	Pre-determined rates	100	22/03/2018
174	LDE/B19/2017/18		29-Sep-17	24-Oct-17	MPOCON BUILDING CONSTRUCTION	Pre-determined rates	100	22/03/2018
175	LDE/B19/2017/18		29-Sep-17	24-Oct-17	NATTY HOLDINGS PTY LTD	Pre-determined rates	100	22/03/2018
176	LDE/B19/2017/18		29-Sep-17	24-Oct-17	BOLEDI MMAPATLA TRADING PROJECTS PTY LTD	Pre-determined rates	100	22/03/2018
177	LDE/B19/2017/18		29-Sep-17	24-Oct-17	DIMARATSO TRADING AND PROJECTS	Pre-determined rates	100	22/03/2018
178	LDE/B19/2017/18		29-Sep-17	24-Oct-17	SEKOLO TRADING AND PROJECTS	Pre-determined rates	100	22/03/2018
179	LDE/B19/2017/18		29-Sep-17	24-Oct-17	KANJO BUSINESS ENTERPRISE	Pre-determined rates	100	22/03/2018
180	LDE/B19/2017/18		29-Sep-17	24-Oct-17	TUMETSI EXPRESS SUPPLY AND RISK MANAGEMENT SERVICES	Pre-determined rates	100	22/03/2018
181	LDE/B19/2017/18		29-Sep-17	24-Oct-17	AMO-A MAS BUSINESS ENTERPRISE CC	Pre-determined rates	100	22/03/2018
182	LDE/B19/2017/18		29-Sep-17	24-Oct-17	BRIGHT IDEA PROJECTS 838	Pre-determined rates	100	22/03/2018
183	LDE/B19/2017/18		29-Sep-17	24-Oct-17	MALETEBOGO BUSINESS ENTERPRISE	Pre-determined rates	100	22/03/2018
184	LDE/B19/2017/18		29-Sep-17	24-Oct-17	BLACK AND TRADING	Pre-determined rates	100	22/03/2018
185	LDE/B19/2017/18		29-Sep-17	24-Oct-17	SELAELO TRADING ENTERPRISE	Pre-determined rates	100	22/03/2018
186	LDE/B19/2017/18		29-Sep-17	24-Oct-17	MADEPH TECHNICAL SERVICES	Pre-determined rates	100	22/03/2018
187	LDE/B19/2017/18		29-Sep-17	24-Oct-17	NAKISENI BUSINESS ENTERPRISE	Pre-determined rates	100	22/03/2018
188	LDE/B19/2017/18		29-Sep-17	24-Oct-17	TMJ CONSTRUCTION (PTY)LTD	Pre-determined rates	100	22/03/2018
189	LDE/B19/2017/18		29-Sep-17	24-Oct-17	VHAVHUSO TRADING ENTERPRISE	Pre-determined rates	100	22/03/2018
190	LDE/B19/2017/18		29-Sep-17	24-Oct-17	TLG TRADING	Pre-determined rates	100	22/03/2018
191	LDE/B19/2017/18		29-Sep-17	24-Oct-17	DETEEM SUPPLY AND PROJECTS (PTY)LTD	Pre-determined rates	100	22/03/2018
192	LDE/B19/2017/18		29-Sep-17	24-Oct-17	RAMTEN TRADING	Pre-determined rates	100	22/03/2018
193	LDE/B19/2017/18		29-Sep-17	24-Oct-17	TENVIEW TRADING	Pre-determined rates	100	22/03/2018

**LIMPOPO PROVINCIAL TENDER BULLETIN NO 04 OF 2018/19 FY, 26 APRIL 2018**

NO.	BID NO. (LDE/B )	DESCRIPTI ON	ADVERT PERIOD		SUPPLIER(S)	PRICE(S)	TOTAL POINTS ATTAIN ED	DATE OF AWARD
			DATE OF ADVERT	CLOSIN G DATE				
194	LDE/B19/2017/18		29-Sep-17	24-Oct-17	NUNGO HEALTHS FOOD (PTY)LTD	Pre-determined rates	100	22/03/2018
195	LDE/B19/2017/18		29-Sep-17	24-Oct-17	MATOPO LAKES GARDEN AND PROJECTS	Pre-determined rates	100	22/03/2018
196	LDE/B19/2017/18		29-Sep-17	24-Oct-17	CAHORA GROUP	Pre-determined rates	100	22/03/2018
197	LDE/B19/2017/18		29-Sep-17	24-Oct-17	NTSHIZAS TECHNICAL SERVICES	Pre-determined rates	100	22/03/2018
198	LDE/B19/2017/18		29-Sep-17	24-Oct-17	GRAPESEED TRADING 93	Pre-determined rates	100	22/03/2018
199	LDE/B19/2017/18		29-Sep-17	24-Oct-17	LIVHETHO GENERAL DEALER	Pre-determined rates	100	22/03/2018
200	LDE/B19/2017/18		29-Sep-17	24-Oct-17	THENJENI HOLDINGS	Pre-determined rates	100	22/03/2018
201	LDE/B19/2017/18		29-Sep-17	24-Oct-17	BONUMART (PTY) LTD	Pre-determined rates	100	22/03/2018
202	LDE/B19/2017/18		29-Sep-17	24-Oct-17	MANDAB TRADING ENTERPRISE	Pre-determined rates	100	22/03/2018
203	LDE/B19/2017/18		29-Sep-17	24-Oct-17	MALWANDLA TRADING ENTERPRISE	Pre-determined rates	100	22/03/2018
204	LDE/B19/2017/18		29-Sep-17	24-Oct-17	RRA TRADING	Pre-determined rates	100	22/03/2018
205	LDE/B19/2017/18		29-Sep-17	24-Oct-17	TSHIPATA TECHNOLOGIES	Pre-determined rates	100	22/03/2018
206	LDE/B19/2017/18		29-Sep-17	24-Oct-17	MUSHOMA SECURITY SERVICES	Pre-determined rates	100	22/03/2018
207	LDE/B19/2017/18		29-Sep-17	24-Oct-17	RNMM CONSULTING	Pre-determined rates	100	22/03/2018
208	LDE/B19/2017/18		29-Sep-17	24-Oct-17	VHUKONA HOLDINGS	Pre-determined rates	100	22/03/2018
209	LDE/B19/2017/18		29-Sep-17	24-Oct-17	EULANI TRADING & PROJECTS	Pre-determined rates	100	22/03/2018
210	LDE/B19/2017/18		29-Sep-17	24-Oct-17	RAMMIE TRADING ENTERPRISE	Pre-determined rates	100	22/03/2018
211	LDE/B19/2017/18		29-Sep-17	24-Oct-17	GUTHENDU TRADING AND PROJECTS	Pre-determined rates	100	22/03/2018
212	LDE/B19/2017/18		29-Sep-17	24-Oct-17	VHAHULWANE CONSTRUCTION & SUPPLY	Pre-determined rates	100	22/03/2018
213	LDE/B19/2017/18		29-Sep-17	24-Oct-17	VHAKOLOLO TRADING ENTERPRISE	Pre-determined rates	100	22/03/2018
214	LDE/B19/2017/18		29-Sep-17	24-Oct-17	TMH FASHION HOUSE (PTY)LTD	Pre-determined rates	100	22/03/2018
215	LDE/B19/2017/18		29-Sep-17	24-Oct-17	DAKSUM TRADING	Pre-determined rates	100	22/03/2018
216	LDE/B19/2017/18		29-Sep-17	24-Oct-17	PORCHVILLA& HOTEL	Pre-determined rates	100	22/03/2018
217	LDE/B19/2017/18		29-Sep-17	24-Oct-17	RETHABILE BUSINESS ENTERPRISE	Pre-determined rates	100	22/03/2018
218	LDE/B19/2017/18		29-Sep-17	24-Oct-17	RONNET TRADING (PTY) LTD	Pre-determined rates	100	22/03/2018
219	LDE/B19/2017/18		29-Sep-17	24-Oct-17	MAGE ENTERPRISE	Pre-determined rates	100	22/03/2018

**LIMPOPO PROVINCIAL TENDER BULLETIN NO 04 OF 2018/19 FY, 26 APRIL 2018**

NO.	BID NO. (LDE/B )	DESCRIPTI ON	ADVERT PERIOD		SUPPLIER(S)	PRICE(S)	TOTAL POINTS ATTAIN ED	DATE OF AWARD
			DATE OF ADVERT	CLOSIN G DATE				
220	LDE/B19/2017/18		29-Sep-17	24-Oct-17	DETSHITEVHU TRADING AND PROJECTS	Pre-determined rates	100	22/03/2018
221	LDE/B19/2017/18		29-Sep-17	24-Oct-17	SELSHONI TRADING ENTERPRISE	Pre-determined rates	100	22/03/2018
222	LDE/B19/2017/18		29-Sep-17	24-Oct-17	HLENGAN CONSULTANCY	Pre-determined rates	100	22/03/2018
223	LDE/B19/2017/18		29-Sep-17	24-Oct-17	DELIBLOX	Pre-determined rates	100	22/03/2018
224	LDE/B19/2017/18		29-Sep-17	24-Oct-17	NDOTENDA CONSTRUCTION COMPANY	Pre-determined rates	100	22/03/2018
225	LDE/B19/2017/18		29-Sep-17	24-Oct-17	CHRESTIE GENERAL TRADE & SUPPLY	Pre-determined rates	100	22/03/2018
226	LDE/B19/2017/18		29-Sep-17	24-Oct-17	RAMUDZWAGI CONSTRUCTION	Pre-determined rates	100	22/03/2018
227	LDE/B19/2017/18		29-Sep-17	24-Oct-17	MVUDI PARK TRADING 40	Pre-determined rates	100	22/03/2018
228	LDE/B19/2017/18		29-Sep-17	24-Oct-17	MAZIBUYE TRADING ENTERPRISE	Pre-determined rates	100	22/03/2018
229	LDE/B19/2017/18		29-Sep-17	24-Oct-17	C MATODZI PROJECTS	Pre-determined rates	100	22/03/2018
230	LDE/B19/2017/18		29-Sep-17	24-Oct-17	TSHIWANALANI TRADING	Pre-determined rates	100	22/03/2018
231	LDE/B19/2017/18		29-Sep-17	24-Oct-17	HAZEL MOON TRADING 26	Pre-determined rates	100	22/03/2018
232	LDE/B19/2017/18		29-Sep-17	24-Oct-17	AZMEC CONSULTING	Pre-determined rates	100	22/03/2018
233	LDE/B19/2017/18		29-Sep-17	24-Oct-17	THILIVALI TRADING ENTERPRISE	Pre-determined rates	100	22/03/2018
234	LDE/B19/2017/18		29-Sep-17	24-Oct-17	LP BUSINESS ENTERPRISE	Pre-determined rates	100	22/03/2018
235	LDE/B19/2017/18		29-Sep-17	24-Oct-17	MAE TRANSPORT (PTY) LTD	Pre-determined rates	100	22/03/2018
236	LDE/B19/2017/18		29-Sep-17	24-Oct-17	KHANO DEVELOPMENT SERVICES	Pre-determined rates	100	22/03/2018
237	LDE/B19/2017/18		29-Sep-17	24-Oct-17	TSHINDIPHO TRADING ENTERPRISE	Pre-determined rates	100	22/03/2018
238	LDE/B19/2017/18		29-Sep-17	24-Oct-17	LIVRAM TRADING ENTERPRISE	Pre-determined rates	100	22/03/2018
239	LDE/B19/2017/18		29-Sep-17	24-Oct-17	POPS FAST FOOD (PTY) LTD	Pre-determined rates	100	22/03/2018
240	LDE/B19/2017/18		29-Sep-17	24-Oct-17	VHUNENE CONSTRUCTION AND PROJECTS	Pre-determined rates	100	22/03/2018
241	LDE/B19/2017/18		29-Sep-17	24-Oct-17	PEDMUDENGE (PTY)LTD	Pre-determined rates	100	22/03/2018
242	LDE/B19/2017/18		29-Sep-17	24-Oct-17	CHIWIVI EVENT MANAGEMENT AND PROJECTS (PTY)LTD	Pre-determined rates	100	22/03/2018
243	LDE/B19/2017/18		29-Sep-17	24-Oct-17	NYALUWO BUSINESS CONSULTANCY	Pre-determined rates	100	22/03/2018
244	LDE/B19/2017/18		29-Sep-17	24-Oct-17	TAUSAT (PTY) LTD	Pre-determined rates	100	22/03/2018



**LIMPOPO PROVINCIAL TENDER BULLETIN NO 04 OF 2018/19 FY, 26 APRIL 2018**

NO.	BID NO. (LDE/B )	DESCRIPTI ON	ADVERT PERIOD	CLOSIN G DATE	SUPPLIER(S)	PRICE(S)	TOTAL POINTS ATTAIN ED	DATE OF AWARD
			DATE OF ADVERT					
245	LDE/B19/ 2017/18		29-Sep-17	24-Oct-17	THENDOWANGA TRADING 3 (PTY)LTD	Pre-determined rates	100	22/03/2018
246	LDE/B19/ 2017/18		29-Sep-17	24-Oct-17	MADALANE AND DAUGHTERS TRADING & TRANSPORT	Pre-determined rates	100	22/03/2018
247	LDE/B19/ 2017/18		29-Sep-17	24-Oct-17	MAANOANGA TRADING ENTERPRISE	Pre-determined rates	100	22/03/2018
248	LDE/B19/ 2017/18		29-Sep-17	24-Oct-17	MUNYALIWA TRADING ENTERPRISE	Pre-determined rates	100	22/03/2018
249	LDE/B19/ 2017/18		29-Sep-17	24-Oct-17	FARANANI SECURITY SERVICES (PTY)LTD	Pre-determined rates	100	22/03/2018
250	LDE/B19/ 2017/18		29-Sep-17	24-Oct-17	CHIKUNI STATIONERY	Pre-determined rates	100	22/03/2018
251	LDE/B19/ 2017/18		29-Sep-17	24-Oct-17	DOLAPORT TRADING	Pre-determined rates	100	22/03/2018
252	LDE/B19/ 2017/18		29-Sep-17	24-Oct-17	GROSS AFRICA SUPERMARKETS	Pre-determined rates	100	22/03/2018
253	LDE/B19/ 2017/18		29-Sep-17	24-Oct-17	MAVESTRA CONSTRUCTION AND CLEANING	Pre-determined rates	100	22/03/2018
254	LDE/B19/ 2017/18		29-Sep-17	24-Oct-17	MATJITJIS BUSINESS TRADING	Pre-determined rates	100	22/03/2018
255	LDE/B19/ 2017/18		29-Sep-17	24-Oct-17	ROCKON (PTY) LTD	Pre-determined rates	100	22/03/2018
256	LDE/B19/ 2017/18		29-Sep-17	24-Oct-17	MAZAXA CONSTRUCTION AND PROJECTS	Pre-determined rates	100	22/03/2018
257	LDE/B19/ 2017/18		29-Sep-17	24-Oct-17	KTS GENERAL TRADER	Pre-determined rates	100	22/03/2018
258	LDE/B19/ 2017/18		29-Sep-17	24-Oct-17	LEGAGANG CONSTRUCTION AND PROJECTS	Pre-determined rates	100	22/03/2018
259	LDE/B19/ 2017/18		29-Sep-17	24-Oct-17	VALOTYPE 167 CC	Pre-determined rates	100	22/03/2018
260	LDE/B19/ 2017/18		29-Sep-17	24-Oct-17	MAHLATSI SECURITY SERVICES	Pre-determined rates	100	22/03/2018
261	LDE/B19/ 2017/18		29-Sep-17	24-Oct-17	MATHETO GENERAL TRADE	Pre-determined rates	100	22/03/2018
262	LDE/B19/ 2017/18		29-Sep-17	24-Oct-17	SESADI TRADING ENTERPRISE	Pre-determined rates	100	22/03/2018
263	LDE/B19/ 2017/18		29-Sep-17	24-Oct-17	MAHLALEPHANE'S TRADING	Pre-determined rates	100	22/03/2018
264	LDE/B19/ 2017/18		29-Sep-17	24-Oct-17	NGWANA MONANEDI TRADING ENTERPRISE	Pre-determined rates	100	22/03/2018
265	LDE/B19/ 2017/18		29-Sep-17	24-Oct-17	MONKWE DIETETICS SERVICES	Pre-determined rates	100	22/03/2018
266	LDE/B19/ 2017/18		29-Sep-17	24-Oct-17	TOUCH THABANA PROJECTS (PTY)LTD	Pre-determined rates	100	22/03/2018
267	LDE/B19/ 2017/18		29-Sep-17	24-Oct-17	JOXISPACE	Pre-determined rates	100	22/03/2018
268	LDE/B19/ 2017/18		29-Sep-17	24-Oct-17	PALJAS TRADING	Pre-determined rates	100	22/03/2018

**LIMPOPO PROVINCIAL TENDER BULLETIN NO 04 OF 2018/19 FY, 26 APRIL 2018**

NO.	BID NO. (LDE/B )	DESCRIPTI ON	ADVERT PERIOD		SUPPLIER(S)	PRICE(S)	TOTAL POINTS ATTAIN ED	DATE OF AWARD
			DATE OF ADVERT	CLOSIN G DATE				
269	LDE/B19/ 2017/18		29-Sep-17	24-Oct-17	TSHEPO J HOLDINGS (PTY)LTD	Pre-determined rates	100	22/03/2018
270	LDE/B19/ 2017/18		29-Sep-17	24-Oct-17	MAKWAESILO TRADING	Pre-determined rates	77	22/03/2018
271	LDE/B19/ 2017/18		29-Sep-17	24-Oct-17	MATEBELE TARDING	Pre-determined rates	76	22/03/2018
272	LDE/B19/ 2017/18		29-Sep-17	24-Oct-17	NTEMA INVESTMENTS CC	Pre-determined rates	76	22/03/2018
273	LDE/B19/ 2017/18		29-Sep-17	24-Oct-17	TUSCAN LODGE (PTY) LTD	Pre-determined rates	76	22/03/2018
274	LDE/B19/ 2017/18		29-Sep-17	24-Oct-17	MOSHAOPANE CONSTRUCTION AND SUPPLY	Pre-determined rates	76	22/03/2018
275	LDE/B19/ 2017/18		29-Sep-17	24-Oct-17	ALEXMA TRADING	Pre-determined rates	76	22/03/2018
276	LDE/B19/ 2017/18		29-Sep-17	24-Oct-17	MOLEPA TRADING ENTERPRISE	Pre-determined rates	76	22/03/2018
277	LDE/B19/ 2017/18		29-Sep-17	24-Oct-17	DINAPULE CONSTRUCTION AND CATERING ENTERPRISE	Pre-determined rates	76	22/03/2018
278	LDE/B19/ 2017/18		29-Sep-17	24-Oct-17	KHANYI KGABO CONSULTING	Pre-determined rates	75	22/03/2018
279	LDE/B19/ 2017/18		29-Sep-17	24-Oct-17	MALETSHOLO INVESTMENTS	Pre-determined rates	75	22/03/2018
280	LDE/B19/ 2017/18		29-Sep-17	24-Oct-17	NKOLO NEBO TRADING	Pre-determined rates	75	22/03/2018
281	LDE/B19/ 2017/18		29-Sep-17	24-Oct-17	HOUSE OF ALUMINIUM	Pre-determined rates	75	22/03/2018
282	LDE/B19/ 2017/18		29-Sep-17	24-Oct-17	MULAIFA DEVELOPMENT PROJECTS	Pre-determined rates	75	22/03/2018
283	LDE/B19/ 2017/18		29-Sep-17	24-Oct-17	RAMADIMETJA SECURITYES CC	Pre-determined rates	74.75	22/03/2018

5 CANCELLED BID

DEPARTMENT OF AGRICULTURE AND RURAL DEVELOPMENT

TENDER BULLETIN NO.	BID NO	PROJECT DESCRIPTION	DATE ADVERTISED	DATE CLOSED	REASON FOR CANCELLATION
37 OF 2017/2018 FY	ACDP 17/53	Supply, delivery, installation of vegetable tower garden technology at poor households and schools supported by Limpopo Department of Agriculture and Rural Development through food security.	19/01/2018	19/02/2018	All received bids were none responsive therefore the department decided to go for a close bid

6 SPECIAL NOTICES

**VHEMBE TVET COLLEGE**

**6.1 REGISTRATION COLLEGE DATABASE (2018)**

**CLOSING DATE: 14 JUNE 2018**

All the prospective service providers are invited to register in our college database to render under listed services

Services providers are only allowed to register two services of their specialisation. Application for registration should be accompanied by the following documents.

- Company Registration Certificate
- CSD (Proof of Central Supplier Database registration with national treasury )
- Company Profile
- Original tax clearance
- Bank Statement or Cancelled Cheque
- Certified Id Copy
- BBB –EE Certificate
- Proof of Residence of Company
- CIDB (where applicable e.g. ME grading for Air conditioning Services)

**LIST OF SERVICES**

1. Accommodation
2. Advertisement
3. Building and Construction (**CIDB is required.**)
  
4. Catering
- NB Health and Safety certificate**
5. Cleaning Services and materials supply
6. Workshop Equipment and Supplier
7. Computer Consumable
8. Computers Hardware and Soft-ware
9. Event Management.
10. Office Equipment, Accessories, Supplier and Maintenance.
11. Security and Surveillance Services
12. Stationery
13. Telecommunication
14. Veterinary Services
15. Audio –Visual Equipment
16. Electronic Equipment Repair and Supply (**CIDB is required.**)
17. Transport
18. Couriers Services
19. Maintenance and Supply of fire extinguishers (**CIDB is required.**)
  
20. Maintenance and Supply of Air Conditioners (**CIDB is required.**)
21. Refilling of gas

**LIMPOPO PROVINCIAL TENDER BULLETIN NO 04 OF 2018/19 FY, 26 APRIL 2018**

22. Hospitality Equipment Pest Control
23. Pest Control
24. Protective Clothing and uniforms
25. Welders –Artisan Certificate
26. Decorations
27. Hardware Materials
28. Plumbing (**CIDB is required**)
29. Electrical Construction/ maintenance (**CIDB is required.**)
30. Insurance Services
31. Bookshop / Book Sellers
32. Publishers
33. Agriculture
34. Steel
35. Perishable Providers
36. Furniture
37. Borehole Drilling and Equipment
38. Laboratory Chemicals and apparatus
39. Tyre and tyre Fitment Services
40. Dry cleaning
41. Locksmith
42. Motivational Speaker
43. Supply of sand / Stone and Concrete

**NB: COMPANIES THAT FAIL TO REGISTER DATABASE WOULD NOT BE ALLOWED TO PARTICIPATE IN ALL OUR BIDDING PROCESS.**

**Enquire to be directed to: Mphahlele ND and Manena SR**

**Tel: 0159633156**

**Fax: 015 963 3154**

**Email: [fetcol@mweb.co.za](mailto:fetcol@mweb.co.za)**

**8 SPECIAL NOTICES**

**6.1. LIMPOPO PROVINCIAL TREASURY**

**6.1.1 (SCM ADVICE CENTERS):**

**ADVERTISEMENTS OF LIMPOPO CSD CALL CENTRE LINES FOR SUPPLIERS**

**LIMPOPO CSD CALL CENTRE LINES FOR SUPPLIERS**

DISTRICT	CALL CENTRE NUMBER	OFFICIAL RESPONSIBLE	TIME
Head Office	015 291 2684	Mr.Muthivhi MC	07H30 TO 16H30
Mopani	015 812 0256	Ms. Nxumalo P	07H30 TO 16H30
Sekhukhune	013 265 1071	Mrs Morena MM	07H30 TO 16H30
Vhembe	015 962 0014	Mrs. Nefolovhodwe MQ	07H30 TO 16H30
Waterberg	014 717 1376	Mrs. Tsatsi AT	07H30 TO 16H30

**6.1.2 ADVERTISEMENT OF E-PORTAL ROLL OUT ROADSHOW AS PER DISTRICT:-**

**CAPRICORN SUPPLY CHAIN MANAGEMENT ADVICE CENTRE**

(E-Portal Roll out Roadshow program)

DATE	MUNICIPALITY	VENUE	TARGET	TIME
19/04/2018	Polokwane	Seshego MASTEC	SUPPLIERS	10H00
23/04/2018	Lepelle-Nkumpi	Lebowakgomo government Complex	SUPPLIERS	10H00

For more information please contact Ms Masindi MM at Tel. 015 291 8424

**MOPANI SUPPLY CHAIN MANAGEMENT ADVICE CENTRE**

(E-Portal Roll out Roadshow program)

DATE	MUNICIPALITY	VENUE	TARGET	TIME
17/04/2018	Greater Tzaneen	Nkowankowa Community Hall	SUPPLIERS	10H00
19/04/2018	Ba-Phalaborwa	Namakgale Community Hall	SUPPLIERS	10H00
24/04/2018	Maruleng	Botswana Community Hall	SUPPLIERS	10H00
26/04/2018	Greater Letaba	Kgapane SASKO Hall	SUPPLIERS	10H00

For more information please contact Mr Mbedzi MB at Tel. 015 8120149

## LIMPOPO PROVINCIAL TENDER BULLETIN NO 04 OF 2018/19 FY, 26 APRIL 2018

### SEKHUKHUNE SUPPLY CHAIN MANAGEMENT ADVICE CENTRE

(E-Portal Roll out Roadshow program)

DATE	MUNICIPALITY	VENUE	TARGET	TIME
17/04/2018	Ephraim Mogale	Municipal Hall	SUPPLIERS	10H00
19/04/2018	Elias Motsoaledi	Municipal Chamber	SUPPLIERS	10H00
24/04/2018	Fetakgomo/Tubatse	Fetakgomo Hall	SUPPLIERS	10H00
26/04/2018	Makhuduthamaga	Municipal Chamber	SUPPLIERS	10H00

For more information please contact Mr Sehale M S at Tel. 013 265 1344

### VHEMBE SUPPLY CHAIN MANAGEMENT ADVICE CENTRE

(E-Portal Roll out Roadshow program)

DATE	MUNICIPALITY	VENUE	TARGET	TIME
17/04/2018	Makhado	Makhado Showground Hall	SUPPLIERS	10H00
19/04/2018	Collins Chabane	Malamulele Club House	SUPPLIERS	10H00
24/04/2018	Musina	Nancyfield Community Hall	SUPPLIERS	10H00

For more information please contact Ms Manena A at Tel. 015 962 1752

### WATERBERG SUPPLY CHAIN MANAGEMENT ADVICE CENTRE

(E-Portal Roll out Roadshow program)

DATE	MUNICIPALITY	VENUE	TARGET	TIME
17/04/2018	Lephalale	Traffic Dept.	SUPPLIERS	10H00
19/04/2018	Thabazimbi	Thabazimbi Hospital	SUPPLIERS	10H00
25/04/2018	Modimolle, Mookgophong & Bele-Bela	OR Thambo Hall	SUPPLIERS	10H00

For more information please contact Mr Mogoroga P E at Tel. 015 747 5837

# LIMPOPO PROVINCIAL TENDER BULLETIN NO 04 OF 2018/19 FY, 26 APRIL 2018

## ANNEXURE 1: ADDRESS LIST AND CONTACT DETAILS: LIMPOPO PROVINCIAL DEPARTMENTS

UNIQUE REF. NO.	BID DOCUMENT REFERENCE	CONTACT DETAILS	DOCUMENTS SOLD AT:	DOCUMENTS DEPOSITED AT
100	DSDP	Tel: 015 293 6000 Fax: 015 293 6211 Website: <a href="http://www.limpopo.gov.za">www.limpopo.gov.za</a>	<b>Department of Social Development</b> , Office No. 57 Ground Floor, 21 Biccadd Street POLOKWANE	Deposited in the box located at Department of Social Development, 21 Biccadd Street Polokwane
101	LPT	Tel: 015 298 7000 Fax: 015 295 7010 Website: <a href="http://www.limpopo.gov.za">www.limpopo.gov.za</a>	<b>Provincial Treasury</b> 46 Hans Van Rensburg Street, POLOKWANE and all Provincial Treasury Tender Advice Centres	Deposited in the bid box located outside a guard house at Ismini Towers, 46 Hans Van Rensburg Street, Polokwane
101A	TC/LP	Tel: 015 291 8400 Fax: 015 295 3310 Website: <a href="http://www.limpopo.gov.za">www.limpopo.gov.za</a>	<b>Provincial Treasury</b> 56 – 58 Paul Kruger Street, POLOKWANE and all Provincial Treasury Tender Advice Centres	Deposited in the bid box located in the main entrance, Finance House Building, 56-58 Paul Kruger Street, Polokwane
102	PRDP	Tel: 015 287 6000 Fax: 015 295 3840 Website: <a href="http://www.limpopo.gov.za">www.limpopo.gov.za</a>	<b>Office of the Premier</b> , 40 Hans van Rensburg Street, POLOKWANE and all SCM Advice Centres	Deposited in the bid box located at Mowaneng Building, 40 Hans van Rensburg Street, Polokwane
103	HEDP	Tel: 015 293 6000 Fax: 015 293 6211 Website: <a href="http://www.limpopo.gov.za">www.limpopo.gov.za</a>	<b>Department of Health</b> , Office No. D3 Ground Floor, Old Capricorn Building, 18 College Street, POLOKWANE and all Provincial Treasury Tender Advice Centres	Deposited in the box located at Department of Health and Social Development, 18 College Street, Polokwane
104	LPEDT	Tel: 015 290 7600/1 Fax: 015 297 4494 Website: <a href="http://www.limpopo.gov.za">www.limpopo.gov.za</a>	<b>Department of Education</b> , Corner 113 Biccadd and 24 Excelsior Streets, POLOKWANE and all Provincial Treasury Tender Advice Centres	Deposited in the bid box located in the main entrance of corner 113 Biccadd Street and Excelsior Street, Polokwane
105	PUDP	Tel: 015 295 1000 Fax: 015 295 1163 Website: <a href="http://www.limpopo.gov.za">www.limpopo.gov.za</a>	<b>Department of Roads &amp; Transport</b> , 40 Paul Kruger Street, POLOKWANE and all Provincial Treasury Tender Advice Centres	Deposited in the bid box located at 1 <sup>st</sup> Floor, Paul Kruger Wing, 40 Paul Kruger Street, Polokwane
106	DSSL	Tel: 015 290 2900 Fax: 015 291 4452 Website: <a href="http://www.limpopo.gov.za">www.limpopo.gov.za</a>	<b>Department of Safety, Security and Liaison</b> , 32 Schoeman Street, POLOKWANE and all Provincial Treasury Tender Advice Centres	Deposited in the bid box located in the main entrance of 32 Schoeman Street, Polokwane
107	COGHSTA	Tel: 015 294 2000 Fax: 015 295 4190 Website: <a href="http://www.limpopo.gov.za">www.limpopo.gov.za</a>	<b>Department of Co-Operative Governance, Human Settlements &amp; Traditional Affairs</b> , 28 Market Street, Office No. G 74, Ground Floor, Polokwane.	Deposited in the bid box located at Hensa Towers, Cnr of Rabe and Landdros Mare Streets, Polokwane
108	DSAC	Tel: 015 284 4000 Fax: 015 284 4514 Website: <a href="http://www.limpopo.gov.za">www.limpopo.gov.za</a>	<b>Department of Sport, Arts and Culture</b> Olympic Towers, Corner Rabe and Biccadd Street, POLOKWANE and all Provincial Treasury Tender Advice Centre	Deposited in the bid box located in the main entrance of Olympic Towers, Corner 21 Rabe and Biccadd Street, Polokwane
109	LEDET	Tel: 015 293 8300 Fax: 015 293 8319 Website: <a href="http://www.limpopo.gov.za">www.limpopo.gov.za</a>	<b>Department of Economic Development, Environment &amp; Tourism</b> , 90 Bok Street, POLOKWANE and all SCM Advice Centres	Deposited in the bid box located in the main entrance of Evridiki Towers, 19 Biccadd Street, Polokwane
110	LDPW & WODP	Tel: 015 284 7000 Fax: 015 284 7031 Website: <a href="http://www.limpopo.gov.za">www.limpopo.gov.za</a>	<b>Department of Public Works, Roads and Infrastructure</b> ; Towers, 43 Church Street, POLOKWANE and all Provincial Treasury Tender Advice Centres	Deposited in the bid box located at Corner Blaawberg and River Street Ladanna Polokwane 0699 Private Bag X9490 Polokwane 0700
111	ACDP	Tel: 015 294 3000/30/60/90/20 Fax: 015 294 4506 Website: <a href="http://www.limpopo.gov.za">www.limpopo.gov.za</a>	<b>Department of Agriculture</b> , Temo Towers, 69 Biccadd Street, POLOKWANE and all Provincial Treasury Tender Advice Centres	Deposited in the bid box located in the main entrance of AgriVillage, 69 Biccadd Street, Polokwane



**LIMPOPO PROVINCIAL TENDER BULLETIN NO 04 OF 2018/19 FY, 26 APRIL 2018**

**ANNEXURE 2: ADDRESS LIST AND CONTACT DETAILS: LIMPOPO PUBLIC ENTITIES**

UNIQUE REF. NO.	BID DOCUMENT REFERENCE	CONTACT DETAILS	DOCUMENTS SOLD AT:	DOCUMENTS DEPOSITED AT
112	RFB: LIMP	Tel: 015 293 3621 Fax: 015 293 3660 Website: <a href="http://www.golimpopo.co">www.golimpopo.co</a>	<b>State Information Technology Agency (SITA)</b> Limpopo Office, Moolman Building, 27 Market Street, POLOKWANE, 0699	Bid box located in the Main Entrance of Moolman Building, 27 Market Street, Polokwane
113	LTA	Tel: 015 293 3600 Fax: 015 293 3655 Website: <a href="http://www.golimpopo.com">www.golimpopo.com</a>	<b>Limpopo Tourism Agency</b> , ERF 92/688, Portion 2 Southern Gateway, Ext 4, N1 Main Road, Polokwane 0699	Bid box located in the offices ERF 92/688, Portion 2 Southern Gateway, Ext 4, N1 Main Road, Polokwane 0699
114	LGB	Tel: 015 295 5581 Fax: 015 295 3566 Website: <a href="http://www.lgb.org">www.lgb.org</a>	<b>Limpopo Gambling Board</b> , 22 Schoeman Street, POLOKWANE, from 08H30 to 16H00	Bid box located in the main entrance, ground floor, 22 Schoeman Street, Polokwane
115	LEDA	Tel: 015 633 4700 Fax: 015 633 4854 Website: <a href="http://www.leda.co.za">www.leda.co.za</a>	<b>Limpopo Economic Development Agency</b> Enterprise Development Finance, Main Road Lebowakgomo	Bid box located in the main entrance, Enterprise Development Finance, Main Road Lebowakgomo
116	RAL	Tel: 015 284 4600 Fax: 015 284 4701 Website: <a href="http://www.ral.co.za">www.ral.co.za</a>	<b>Road Agency Limpopo (RAL)</b> , RAL Towers, 26 Rabe Street, POLOKWANE, 0700	Bid box located in the entrance foyer (ground floor) of RAL Towers, at 26 Rabe Street, Polokwane
117	GAAL	Tel: 015 288 0122 Fax: 015 288 0346 Website: <a href="http://www.gaal.co.za">www.gaal.co.za</a>	<b>Gateway Airports Authority Limited</b> , N1 Road to Louis Trichardt, Army Base, POLOKWANE International Airport, Polokwane, 0700	Bid box located in the main entrance, ground floor of administration building, Polokwane International Airport, Army Base
118	VIVET	Tel: 015 963 3156 Fax: 015 963 3154 Website: <a href="mailto:www.fetcol@mweb.co.za">www.fetcol@mweb.co.za</a>	<b>Vhembe FET College</b> , Stand No. 203, Unit A, Sibasa, 0970, Limpopo Province	Vhembe Fet College, Central Office, Private Bag X2136, SIBASA 0970
119	WTVET	Tel: 015 491 8581/8602 Fax: 015 491 8579 Website: <a href="http://www.procurement@waterbergcollege.co.za">www.procurement@waterbergcollege.co.za</a>	<b>Waterberg FET College</b> , Central Office, 36 Hooge Street Street, Mokopane, 0600	<b>Waterberg FET College</b> , Central Office, 36 Hooge Street Street, Mokopane, Private Bag x 2449, Mokopane 0600

# LIMPOPO PROVINCIAL TENDER BULLETIN NO 04 OF 2018/19 FY, 26 APRIL 2018

## ANNEXURE 3: ADDRESS LIST AND CONTACT DETAILS: PROVINCIAL TREASURY TENDER ADVICE CENTRES

(Tender bulletins and bid documents are obtainable from the following Centers):

PROVINCIAL TREASURY SUPPLY CHAIN MANAGEMENT ADVICE CENTRES	
<p><b>HEAD OFFICE</b></p> <p>Provincial Supply Chain Management Office 56 – 58 Paul Kruger Street POLOKWANE Private Bag x9494 <b>POLOKWANE, 0700</b> <b>Tel No. (015) 291 8400</b></p> <p>Contact: <b>Ms. M.BRakubu</b> @ Tel: 015 291 8717/6</p>	<p><b>Capricorn SCM Advice Centre</b></p> <p>Limpopo Provincial Treasury 56-58 Paul Kruger Street Private Bag x9494 <b>POLOKWANE, 0700</b> <b>Tel No. (015) 291 8400</b></p> <p>Contact Person: <b>Ms. M.M. Masindi</b></p>
<p><b>Vhembe SCM Advice Centre</b></p> <p>Limpopo Provincial Treasury Government Building Complex BLOCK E GROUND FLOOR <b>THOHOYANDOU, VENDA</b> Tel: (015) 962 1752 Fax: (015) 962 1282</p> <p>Contact Person: <b>Ms. A Manena</b></p>	<p><b>Mopani SCM Advice Centre</b></p> <p>Limpopo Provincial Treasury Private Bag X 1973 <b>GIYANI, 0826</b> Tel: (015) 812 0149 Fax: 086 219 7905</p> <p>Contact Person: <b>Mr. M. B. Mbedzi</b></p>

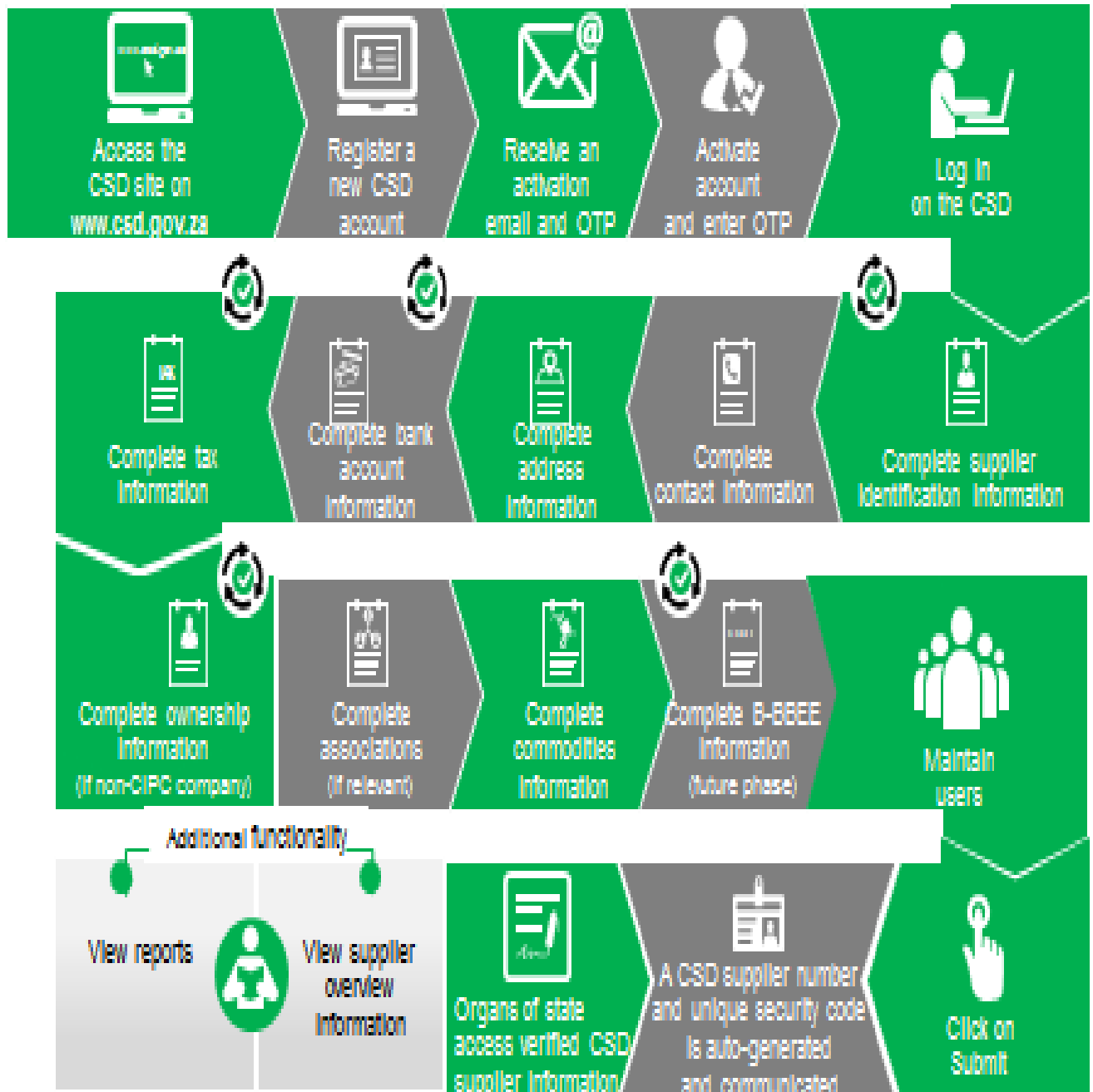
# LIMPOPO PROVINCIAL TENDER BULLETIN NO 04 OF 2018/19 FY, 26 APRIL 2018

## ANNEXURE 4: ADDRESS LIST AND CONTACT DETAILS: SATELLITE OFFICES

(Tender bulletins are obtainable from the following centers)

CAPRICORN	VHEMBE	MOPANI	WATERBERG	SEKHUKHUNE
			Libsa Thabazimbi: No.08 Riet Bok Street Tel. No. (014) 772 2437	
			Libsa Lephalale No. 3A Venter Street Tel. No. (014) 763 2834	

# Supplier Self-Registration Process



Auto verification of supplier information with SARS, GIPC etc